



YC-Series L-Bar Sealer

Models: YC-300HL, YC-450HL, YC-600HL

Distributed By:

Version 1.0

Last Updated: 7/7/2022

Copyright © 2019 by Stephanie Hwang

All rights reserved. No part of this publication may be reproduced, distributed, or transmitted in any form or by any means, including photocopying, recording, or other electronic or mechanical methods, without the prior written permission of the publisher, except in the case of brief quotations embodied in critical reviews and certain other noncommercial uses permitted by copyright law. For permission requests, write to the publisher, addressed "Attention: Permissions Coordinator," at the address below.

Sealer Sales, Inc.
8820 Baird Avenue
Northridge, Ca 91324
www.sealersales.com

Printed in the United States of America

General Information

Thank you for purchasing our YC-Series L-Bar Sealers.

This owner's manual contains information relating to your sealer. The manual will provide you with basic information concerning both operation and maintenance of your new machine. Please read it carefully as failure to do so may result in bodily injury and/or damage to the equipment.

Please fill in the information below. You will find the information on the machine identification plate. You will need this information when ordering replacement parts or making technical inquiries.

No part of this manual may be duplicated, reproduced, stored in a retrieval system, translated, transcribed, or transmitted in any form without the express prior written permission of Sealer Sales.

EQUIPMENT INFORMATION

❖ Model #

❖ Serial #

❖ Purchase Date:

❖ Reference # (found on packing slip)

❖ Owner:

Safety Instructions



WARNING! Below are general safety precautions and warnings that should be understood prior to setting up or operating your equipment. Read and fully understand all instructions and warnings prior to using this unit. Your safety is most important! Failure to comply with procedures may result in serious injury or property damage. Remember: **Your personal safety is your responsibility.**

Unsafe practices or unauthorized modifications could result in accidents or property damage. Failure to follow these safety rules and take necessary precautions can result in serious injury as well as damage to equipment. Failure to comply with the safety instructions would also void the warranty.

- ❖ Never operate or service your sealer until you have read this manual completely and understand it fully.
- ❖ Only plug the sealer into a standard 120 Volt, 60Hz wall outlet or surge protector.
- ❖ Do not use the sealer if the power cord, plug or any other parts are damaged. Do not allow the power cord to drape into your work area. Check that all parts are operating properly and perform the intended functions. Check for any worn parts before starting operation. Check for all other conditions that may affect the operation of your sealer.
- ❖ Reduce risk of unintentional starting. Make sure the power switch is in the "OFF" position before plugging into the power source.
- ❖ Always disconnect sealer from power source before servicing, changing accessories or cleaning the unit.
- ❖ To provide protection against the risk of electrical shock, the power connection must be properly grounded at all times.
- ❖ Do not leave the sealer unattended when power is on. Disconnect the sealer from the power source before leaving the work area.
- ❖ Do not use the machine for any other purpose other than to seal thermoplastic materials. Doing so may result in damage to the machine and injury to the operator.
- ❖ The use of certain types of plastic films in sealing and/or shrinking equipment may result in the release of hazardous fumes due to the degradation of the film at high temperatures. Before using any plastic film in this equipment, the manufacturer or supplier of the film should be contacted for specific information concerning the potential release of hazardous fumes. Adequate ventilation must be provided at all times.
- ❖ While operating machinery, wear close-fitting clothing and tie back long hair to prevent any external items from getting caught in the machine. Do not wear jewelry when operating the sealer.



- ❖ Never touch the heating elements with hand while the sealer is plugged into a power source, in operation or just finished operation. Touching heated areas may cause fire and/or severe burns.
- ❖ While machine is in operation, do not place fingers, tools, or other foreign objects on or into the machine. Do not place hands or fingers near pinch points. Do not touch machine while it is in operation. Perform all procedures carefully and watch where hands and fingers are at all times.
- ❖ The sealer is not water resistant or water proof. Spraying down the machine will damage machine or cause electrical shock. Do not submerge the sealer into water or liquid.
- ❖ Do not operate sealer in a corrosive or humid environment.
- ❖ Always keep the machine clean and in good working condition. Follow any maintenance procedures outlined in this manual. Make sure unit is disconnected from power source before cleaning.
- ❖ NEVER use any accessories or parts from other manufacturers. Machine should not be altered or modified using parts that are not genuine authorized parts. Doing so will VOID YOUR WARRANTY.
- ❖ *When replacing the heating elements, always replace the PTFE adhesive over the heating element. A worn PTFE adhesive can cause the heating element to break.*
- ❖ Never leave the sealer unattended. Be safe, disconnect the sealer from power source before leaving work area.
- ❖ Always keep out of reach of children and pets.
- ❖ Close supervision is necessary when any appliance is near persons with reduced physical, sensory or mental capabilities or lack of experience and knowledge . This sealer is NOT to be used by children or by persons with reduced physical, sensory or mental capabilities or lack of experience and knowledge.
- ❖ Do NOT use the sealer outdoors.
- ❖ Do NOT use the sealer while under the influence of drugs, medications or alcohol.

SAVE THESE INSTRUCTIONS - REFER TO THEM OFTEN AND USE THEM TO INSTRUCT OTHERS.

Introduction

Scan QR Code for Video Demo



YC-Series L-bar sealers are designed for quick and easy shrink film packaging. The L-bar sealers create sealed packages using centerfold shrink film in one step, producing products that have a factory fresh clean look and feel. Our L-bar sealers will create packages that are free from dust, moisture and fingerprints.

Features of the YC-Series L-Bar Sealers

Your L-bar sealer is equipped with a wide range of standard features and capabilities.

- ❖ Ideal for quick and easy shrink film packaging
- ❖ Steel construction for heavy duty use and durability
- ❖ Adjustable film dispenser rack with smooth bearing rollers
- ❖ Works with heat gun or shrink tunnel
- ❖ Includes work table with film separator, twin perforating hole punchers and film roller

How Do YC-Series L-Bar Sealers Work?

Basic Principles

Place material on lower jaw and bring sealing arm to activate sealing process

Our YC-Series impulse sealers fire a short burst of electricity through a specially designed heating wire to weld thermoplastic materials together. The length of the seal time will depend on the sealing characteristics of the material being sealed. The sealing process is simple: The operator places material on the base of the sealer and brings the sealing arm down to seal. The sealer will create an "L-shaped" seal sealing two sides of your package. Our L-bar sealers are ideal for shrink wrapping as the sealer creates a no seam seal. We recommend either PVC or POF shrink film.

Specifications

	YC-300HL	YC-450HL	YC-600HL
Power	110V/60Hz	110V/60Hz	110V/60Hz
Watts	800W	1000W	1500W
Seal Type	Line	Line	Line
Sealing Length (V x H)	11.8" x 17.7"	17.7" x 17.7"	23.6" x 31.4"
Max Height	3.9"	3.9"	3.5"
Sealer Dimensions	21.6" x 18.9" x 7.5"	21.6" x 24.8" x 7.5"	33.8" x 36.6" x 7.5"
Sealer Weight (lbs)	57	68	114
Film Roller Dimensions	27.6" x 19.7" x 5.5"	27.6" x 19.7" x 5.5"	33.5" x 19.7" x 5.5"
Film Roller Weight (lbs)	38	38	70

Getting to Know your L-Bar Sealer

YC-Series L-Bar sealers are simple and efficient sealing machines.

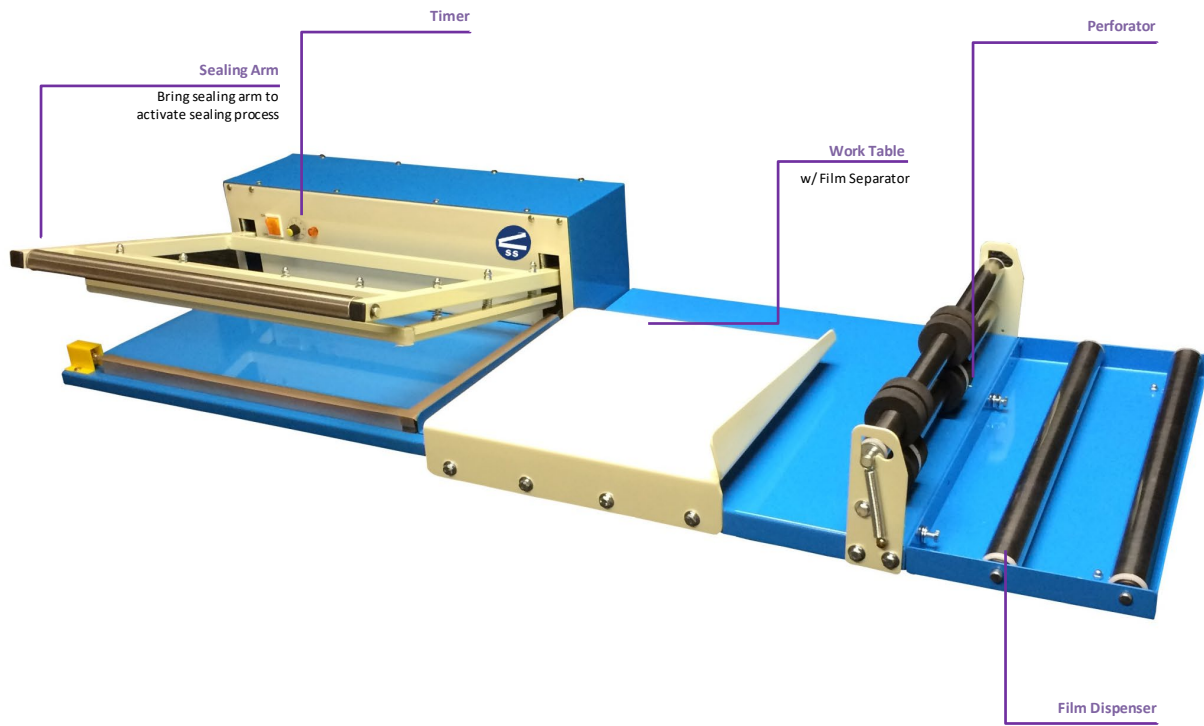


Figure 1. YC-Series L-Bar Sealer Overview

Electrical Circuit Diagram

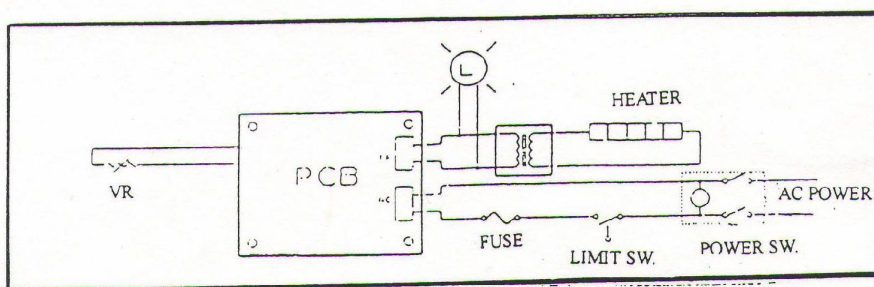


Figure 2. Electrical Circuit Diagram for YC-Series L-Bar Sealers

Operating your Sealer

Important

Read this manual carefully, and make it available to everyone connected with the supervision, maintenance, or operation of this machine. Additional copies are available at your request. (Contact your distributor for this information.) Be very careful when operating, adjusting, or servicing this equipment. If in doubt, stop and obtain qualified help before proceeding.

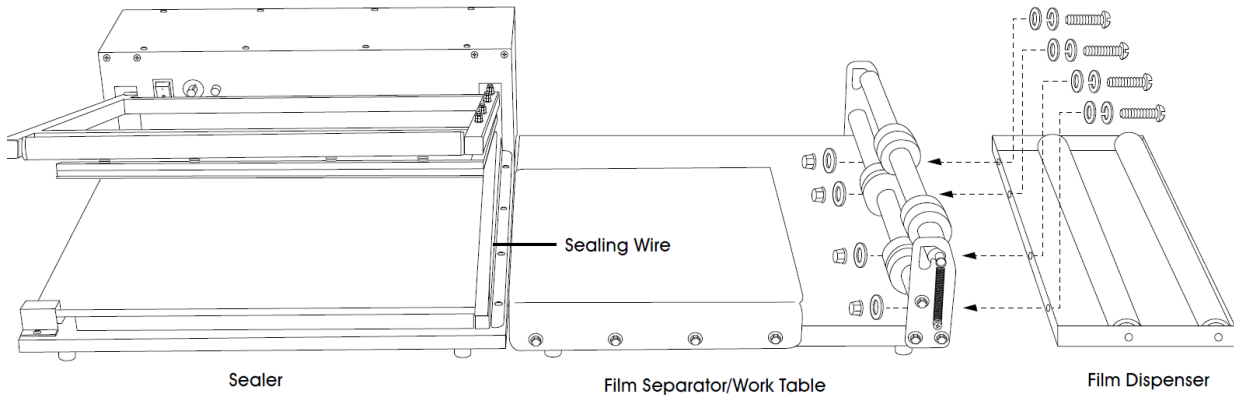
Installation

Place the L-Bar sealer in the desired location with the required electrical power source available. Make certain that proper electrical wiring is provided to guard against low voltage. If the voltage is too low, the equipment will not function properly.

Finding the proper location is a most important function of the initial set-up. One must take several factors into consideration:

- ❖ Adequate power source
 - ❖ Relationship to source of product
 - ❖ Relationship to band sealer
 - ❖ Relationship to any conveyors necessary to transport finished product
 - ❖ Convenience of operator
1. Your new L-Bar sealer will ship in two boxes. The YC-600HL will come wrapped on a pallet to protect it. If your machine does not arrive in good condition, write on shipping paperwork that the box is damaged. Concealed damage may have occurred.
 2. Please take out both the L-Bar sealer and film roller from the boxes.

3. Assemble the film dispenser to the film roller.



4. Place the film roller to the right of the L-Bar sealer. The unit should look like (Figure 3).



Figure 3. Assembled YC-Series L-Bar Sealer

5. Place centerfold film on the film dispenser and feed the film through perforator and work table. Keep the top layer of the film on the top of the work table and the lower layer of the film under the work table.

Operation



1. Before operating, check the heating element, PTFE adhesive and the silicone rubber. The heating element should be intact.
2. Insert the power cord into the correct receptacle (110V).
3. Turn the power switch on.
4. Set the timer knob to the lowest setting. Always start with a low setting and increase gradually as needed.
5. Place the object to be sealed between the sheets of film on the work table. Place right hand on package and slide product into the upper left hand corner of film (i.e. corner formed by folded rear edge of film and previously sealed left edge of film). Keep the object and film as close to the

seal bars as possible for best quality seal. Leave a clearance of about 1" between product and seal bars.

6. Press sealing handle down. Release when the timer light is turned off.

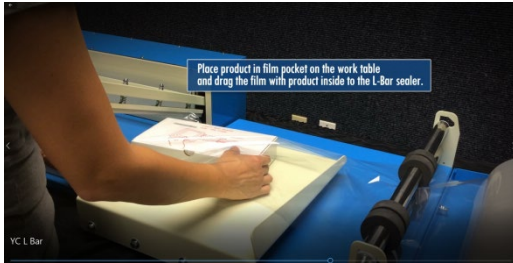


Figure 4. Place object into the upper left hand corner of film

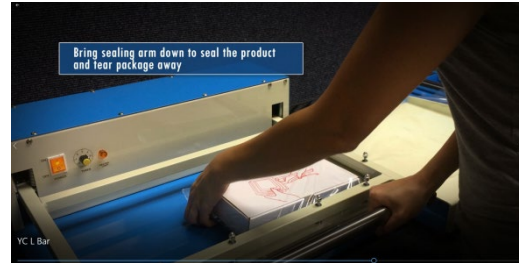


Figure 5. Keep object close to the seal bars.

7. Repeat steps #6-7 for your next package.

Tips for Successful Sealing

1. If the seal is broken or damaged, decrease the sealing time.
2. If the seal is not fully welded, increase the sealing time.
3. If the sealing material sticks to the sealing pad, decrease the congealing time.
4. Always keep the sealer clean. Remove any residue found on the platform and PTFE adhesive. Silicone spray may be used for this purpose.
5. Occasionally check the condition of the ceramics (holds the element in place). A damaged ceramic will affect the quality of the seal.
6. Occasionally check the condition of the silicone rubber for wear or burns. A damaged silicone rubber will affect the quality of the seal.



7. Be sure to turn off the power or unplug the unit before replacing any parts.

Maintenance

The following maintenance procedures should be followed to ensure the longevity of your YC-Series L-Bar sealer.

Inspection and Cleaning

1. Inspect your machine daily.
2. Use a clean cloth to remove any plastic residue remaining on the PTFE adhesive.
3. When replacing the elements, always replace the PTFE adhesive.
4. Check the condition of the ceramics for wear and tear. A damaged ceramic will affect the quality of the seal.
5. Check the condition of the silicone rubber for wear and burns. A damaged silicone rubber will affect the quality of the seal.

Replacement Kit Instructions

Our YC-Series L-Bar will require new heating elements and PTFE from time to time. Heating elements will break through wear and tear. A good rule of thumb is to replace the PTFE adhesive every time you change your heating element.

Replacement kits are available from your distributor. Kits include (2) heating elements and (4) PTFE adhesives.

For replacement kit part #s, refer to your model #.

	YC-300HL	YC-450HL	YC-600HL
Replacement Kit	RK-12L-YC-300HL	RK-18L-YC-450HL	RK-24L-YC-600HL
Heating Element (2.7mm)	HE-1218-YC-300HL	HE-1818-YC-450HL	HE-2432-YC-600HL
PTFE Adhesive #1 (3/4" Wide x 3mil)	TA-12	TA-18	TA-24
PTFE Adhesive #2 (3/4" Wide x 3mil)	TA-18	TA-18	TA-32
Not included in replacement kit			
Ceramic sold as each piece (total number on each unit)	YCL-6 (25)	YCL-6 (30)	YCL-6 (47)
Silicone Rubber	SRSer-YC-300HL	SRSer-YC-450HL	SRSer-YC-600HL

To change the heating element on your sealer, turn off power and unplug sealer

Scan QR Code for Video Demo



1. Remove the heating element cover (**Figure 6**)
2. Lift up the PTFE adhesive to expose the heating element.
3. Loosen the screws on the front spring hook and remove heating element. (**Figure 7**)

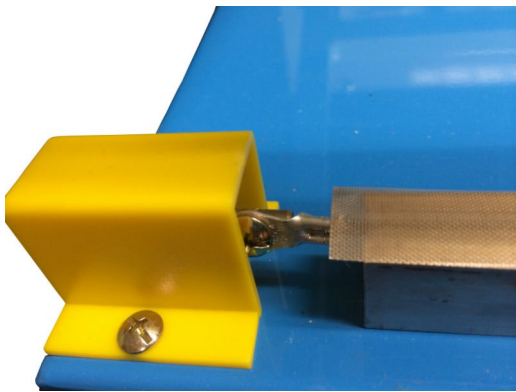


Figure 6. Remove heating element cover



Figure 7. Loosen screw on front spring hook

4. Remove the heating element by lifting off the eyelets of the rear spring hook
5. Connect the heating element to the front spring hook. Screw in the element but do NOT tightly screw in the element just yet. (**Figure 8**).
6. Attach the other end of the heating element to the rear spring hook (**Figure 9**).



Figure 8. Connect heating element to front spring hook.

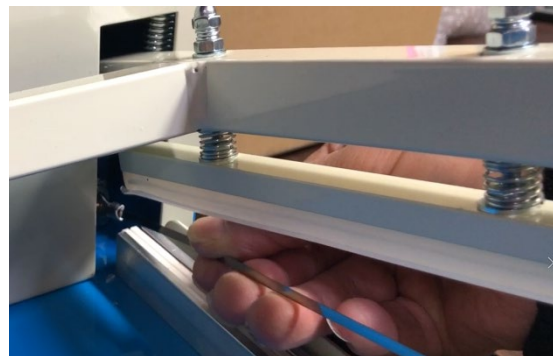


Figure 9. Connect other end of heating element to the rear spring hook.

7. Now that both ends of the heating element are attached, pull the middle of the heating element and place it in the copper turning set (lower right hand corner.) (Figure 8).
8. You can use an object such as bottom of paint brush to assist with pushing the element into the copper turning set.

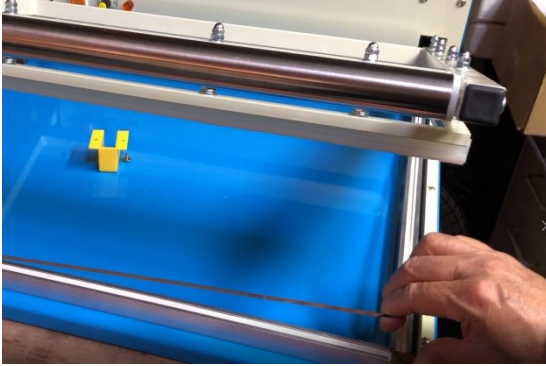


Figure 10. Pull middle of heating element towards copper turning set



Figure 11. Push the heating element into the grooves on the copper turning set

9. Tightly screw the front spring hook assembly.
10. Place a new adhesive over the heating elements.
11. Replace the heating element cover.

Parts Diagram

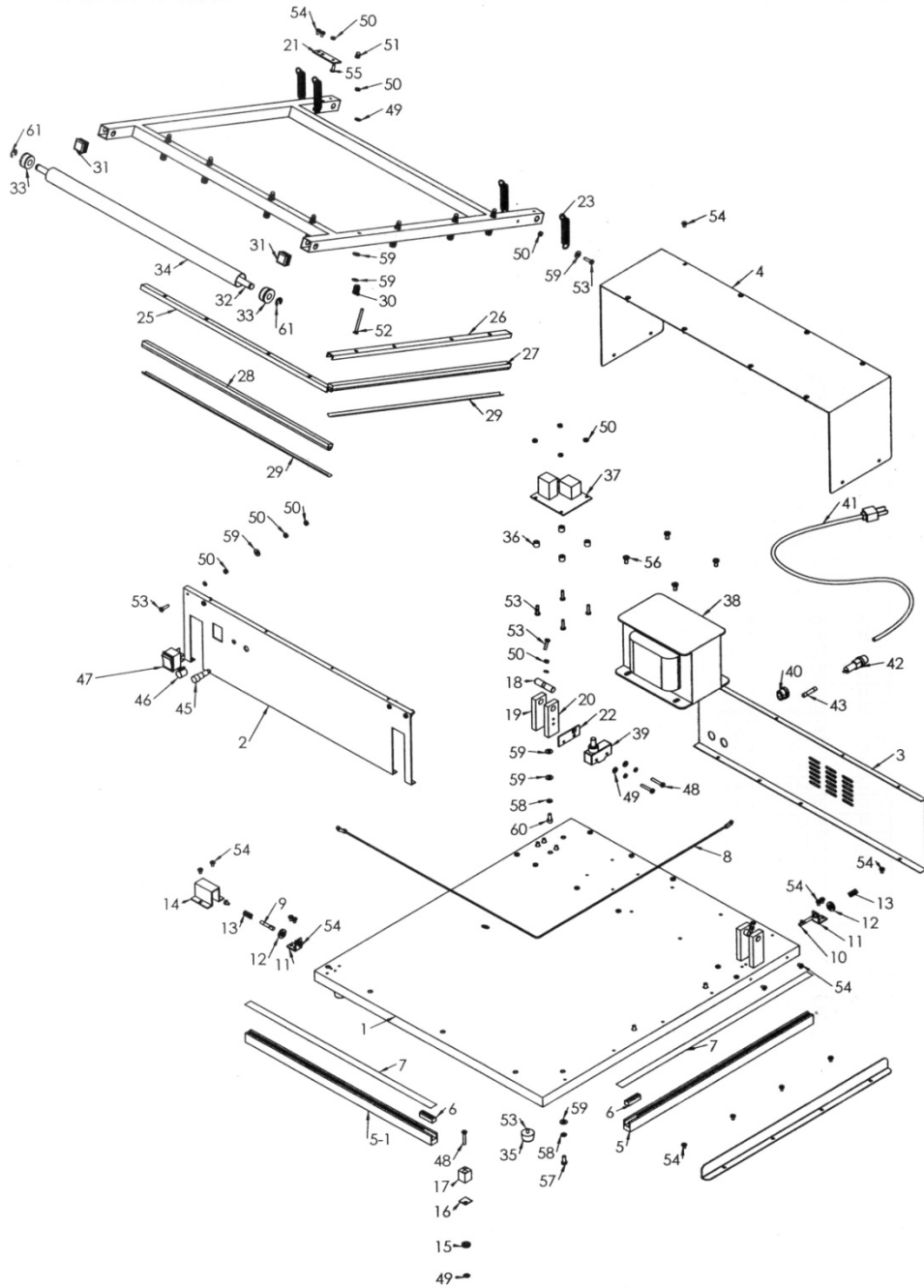


Figure 12. Sealer Spare Parts Diagram

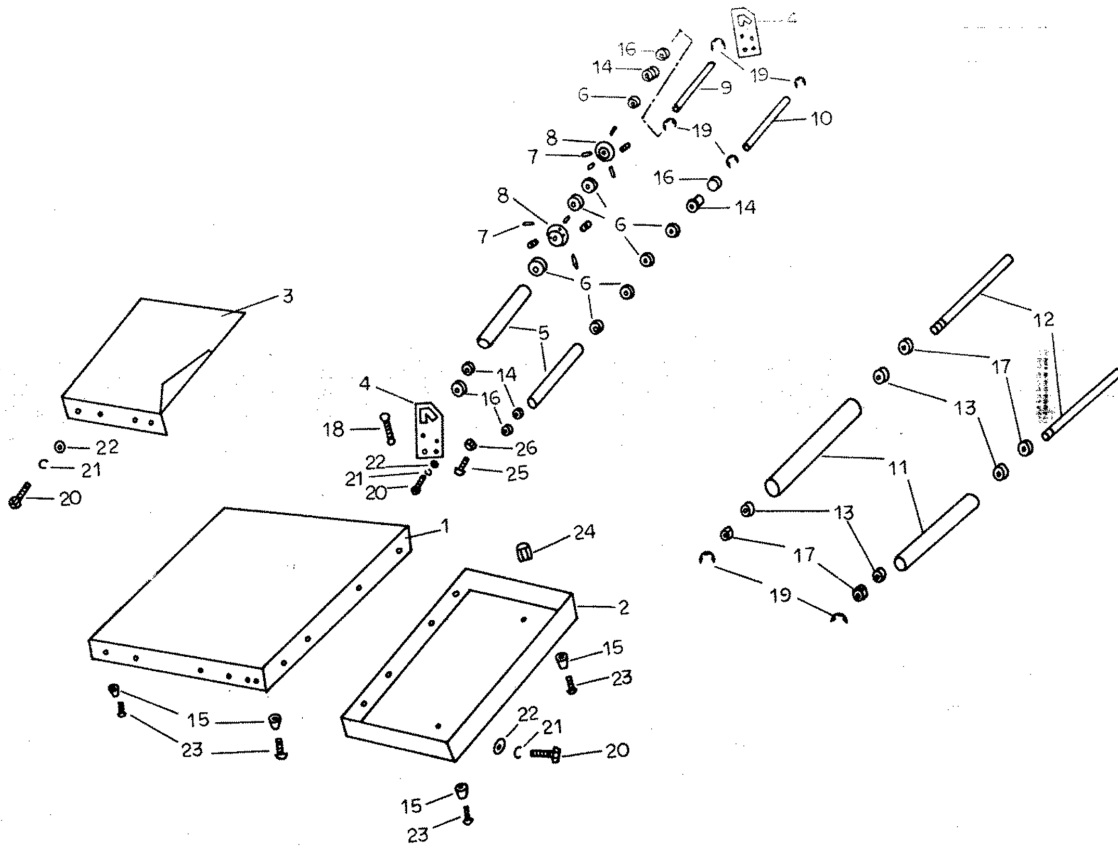


Figure 13. Film Roller Spare Parts Diagram

YCL INSTRUCTION MANUAL

Item	Part #	Description	Manufacturer	Comments
RKs	RK-Model#	REPLACEMENT KITS Includes (2) elements, (2) 1/2" 3mil PTFE adhesives, and (2) 3/4" 3mil PTFE adhesives		specify model # when ordering
1		Bracket / Base	HL-01	specify model # when ordering
2		Control Plate	HL-02	
3		Rear Plate	HL-03	
4		Cover	HL-04	
5		Aluminum Bracket (2pcs set)	HL-05A, 05B, 05C	specify model # when ordering
6	YCL-6	Ceramics	HL-06	300HL 25-pc 450HL 30-pc 600HL 47-pc)
7	TA-3/4- specifymodel#	PTFE Adhesive (3/4") 3mil	HL-07A, 07B, 07C	specify model # when ordering
8	HE-specifymodel#	Heating Wire	HL-08A, 08B, 08C	specify model # when ordering
9	YCL-9	Hook, Front	HL-09	
9a	SHA-YCLF	Spring Hook Assembly-Front, Element Hook Set		Includes #9, 12, 13, 54, 55
10	YCL-10	Hook, Rear	H-25	
10a	SHA-YCLR	Spring Hook Assembly-Rear, Element Hook Set		Includes #10, 12, 13, 54
11	YCL-11	Plate	H-24	
12	YCL-12	Bushing / Washer	H-23	
13	YCL-13	Spring	H-22	
14	YCL-14	Cover, Element	H-21	
15	YCL-15	Bushing / Insulator	HL-10	
16		Bushing / Insulator	HL-11	
17	YCL-17	Copper Turning	HL-12	
17a	YCL-17a	Copper Turning Set		Includes #15, 16, 17, 48, 49, 50
18	YCL-18	Shaft	HL-14	
19	YCL-19	Bracket	HL-13	
20	YCL-20	Bracket w/ 2 extra holes	HL-14	
21	YCL-21	Plate	H-13	
22		Plate / MS Holder	H(L)-10	
23	YCL-23	Spring - ϕ 2.0	HL-15	300HL - 2pcs - 23 / 2pcs - 23a
	YCL-23a	Spring - ϕ 1.6	H-20B	450HL - 4pcs - 23
				600HL - 2pcs - 23 / 6pcs - 23a
24a		Sealing Arm 12x18	HL-16A, 16B, 16C	specify model # when ordering
25		Silicone Bracket - Horizontal	HL-17A, 17B, 17C	specify model # when ordering 300HL - 18" 450HL - 18" 600HL - 32"
26		Silicone Bracket - Vertical	HL-18A, 18B, 18C	specify model # when ordering 300HL - 12" 450HL - 18" 600HL - 24"
27	SR1-specifymodel#	Silicone Rubber - Vertical	H-19A, 19B, 19C	specify model # when ordering 300HL - 12" 450HL - 18" 600HL - 24"
28	SR2-specifymodel#	Silicone Rubber - Horizontal	HL-19A, 19B, 19C	specify model # when ordering 300HL - 18" 450HL - 18" 600HL - 32"
27+28	SRSet-specifymodel#	Silicone Rubber Set		specify model # when ordering

Figure 14. Spare Parts Diagram List (Table 1 of 2)

YCL INSTRUCTION MANUAL

Item	Part #	Description	Manufacturer	Comments
29	TA-1/2-specifymodel#	PTFE Adhesive 10mm (1/2") 3mil	F-09A, 09B, 09C	specify model # when ordering
30	YCL-30	Spring, SR Holder, Arm	HL-20	
31	YCL-31	Lid/Plastic Cover for Frame	H-17	
32		Shaft	HL-21	
33	YCL-33	P.E. Lid for Roller	HL-22	
34		Stainless Roller	HL-23	
35	YCL-35	Rubber Mat / Foot	H-26	
36	YCL-36	Support/white plastic	E-11	
37	PCB-YC-949	P.C. Board for YC-300HL, YC-450HL	E-12A	
	PCB-YC-949B-YC-600HL	P.C. Board for YC-600HL		
38a	TRNS-specifymodel#	Transformer	E-17A	specify model # when ordering
39	MSW-TEWF	Microswitch	E-03	
40	YCL-40	Strain Relief Bushing	E-14	
41	PWC-YC	Power Cord	E-04	
42	YCL-42	Fuse Holder	E-05	
43	Fuse-15amp	Fuse 15A	E-06C	
44	YCL-44	Variable Resistor / Timer	E-07	
45	YCL-45	Lamp 110V	E-08A	
46		Knob/timer	E-09	
47	YCL-47	Power Switch	E-10	
48	YCL-48	Screw M4x25 for Copper Turning	S-04	
49	YCL-49	Washer M4, SRHolder	S-08	
50	YCL-50	Nut M4, SRHolder	S-07	
51	YCL-51	Cap Lock nut M4, SRHolder	S-27	
52	YCL-52	Screw M4x40, M4x45, SRHolder	S-28	
53	YCL-53	Screw M4x15, Arm Spring	S-03	
54	YCL-54	Screw M4x6, Hook	S-01	
55	YCL-55	Screw M4x10, for #3, #9, #21, #35	S-02	
56	YCL-56	Screw M5x8, M5x10, Transformer	S-17	
57	YCL-57	Screw M5x10	S-09	
58	YCL-58	Spring Washer M5 for Bracket	S-11	
59	YCL-59	Washer M5, SR Holder	S-12	
60	YCL-60	Screw M5x12, Bracket	S-10	
61	YCL-61	E-Shaft E-8, Shaft	S-29	
	FILM ROLLER			
6	YC-WR-6	EVA Roller, YC-450WR, 600WR	WR-06	
6a				
7	YC-WR-7	Needle	WR-07	
8	YC-WR-8	Roller	WR-08	
9	YC-WR-7+8	White PE Roller w/Needle		

Figure 15. Spare Parts Diagram List (Table 2 of 2)

Troubleshooting

Problem	Possible Causes	Solution
No sealing Power light is off	<ol style="list-style-type: none"> 1. Disconnected power cord 2. Power cord is broken 3. Blown fuse 4. Transformer is broken 	<ol style="list-style-type: none"> 1. Check or change plug 2. Replace power cord 3. Replace fuse 4. Replace the transformer
No sealing Power lamp is on Sealing lamp is on	<ol style="list-style-type: none"> 1. Heating element is broken 2. Spring hook is loose or in poor contact 2. Terminals of the heating element are in poor contact 	<ol style="list-style-type: none"> 1. Replace the heating element 2. Clean, tighten or change the spring hook assembly 3. Clean the terminals and adjust if needed
No sealing Power light on Sealing lamp is off	<ol style="list-style-type: none"> 1. Microswitch malfunction 2. Microswitch broken 	<ol style="list-style-type: none"> 1. Adjust microswitch 2. Replace microswitch
Burnt PTFE cloth	<ol style="list-style-type: none"> 1. Timer malfunction 2. Timer setting too high 	<ol style="list-style-type: none"> 1. Replace timer 2. Decrease timer setting
Broken heating element	Worn PTFE adhesive	Replace PTFE adhesive
Wrinkled seal	<ol style="list-style-type: none"> 1. Seal time is set too high 2. Cooling (congeal) time is too short 	<ol style="list-style-type: none"> 1. Decrease 2. Increase congealing time
Imperfect seal	<ol style="list-style-type: none"> 1. Worn PTFE cloth 2. Worn silicone rubber 	<ol style="list-style-type: none"> 1. Replace PTFE cloth 2. Replace the silicone rubber
Burnt seal	Seal time is set too high	Decrease seal time
No seal	Seal time is set too low	Increase seal time
Seal sticking to PTFE cloth	<ol style="list-style-type: none"> 1. Worn or dirty PTFE cloth 2. Worn or dirty silicone rubber 	<ol style="list-style-type: none"> 1. Replace or clean PTFE cloth 2. Replace or clean silicone rubber